

Ensemble simulation of seawater temperature and its seasonal variations in vertical gradient - An application to aquaculture operations in Southern Aegean Sea, Greece

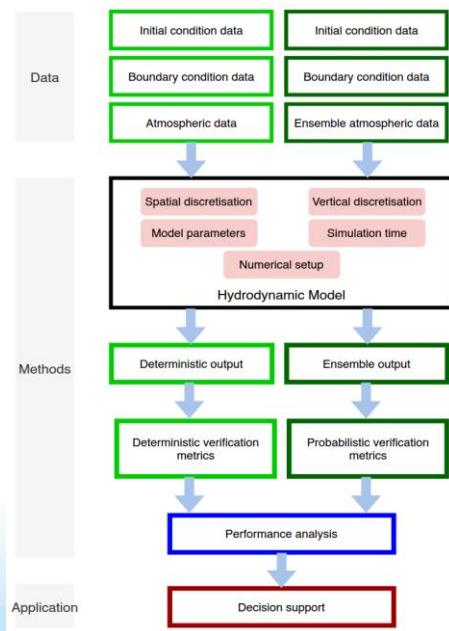
Background

Accurate prediction of **seawater temperature (SWT)** plays an important role in the decision making of **aquaculture** activities. SWT controls fish growth rate, feeding rate, and disease outbreaks. **Coastal numerical models** can predict SWT. Those predictions are affected by uncertainties induced among others by the uncertainties of the input data. In this study, we assess the uncertainty in SWT both in spatial scale and in the vertical gradient arising from the **atmospheric forcing functions** such as wind speed, air temperature, dew point temperature and cloud cover. **Ensemble method** of probabilistic prediction is employed for this purpose. Study is conducted for Southern Aegean Sea of **Greece**.

Methodology

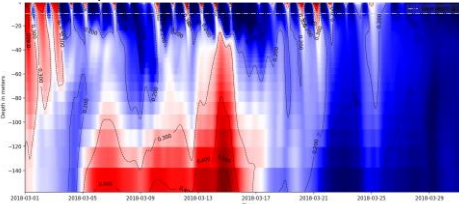
Steps are depicted in the flowchart

- The Coastal hydrodynamic model is developed using **Delft 3D flexible mesh** modelling tool. A uniform grid size of ~1 km is used.
- For the ensemble predictions, 10 members of atmospheric forcing fields with four variables in each are provided to the hydrodynamic model as input for generating 10 member SWT predictions.
- Simulations are performed for 3 years, from 2016 to 2018.
- Uncertainty analysis in predicted SWT is conducted at two aquaculture farm locations (Ortholothi and Ovrrios) considering an upper thermal limit of 26 °C and lower thermal limit of 15 °C for Sea bream species.
- March and August are considered for analysis as winter and summer months respectively.

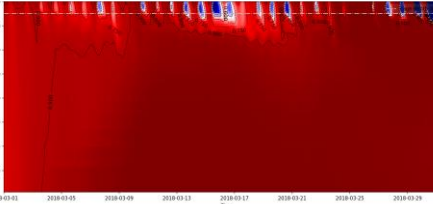


Results

Probability of non-exceedance of 15 °C – March 2018 @Ortholothi

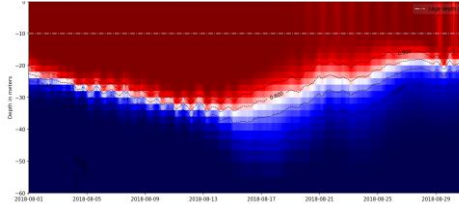


Probability of non-exceedance of 15 °C – March 2018 @Ovrrios

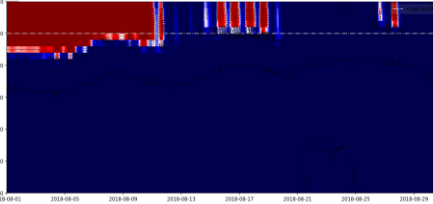


During March, at Ortholothi we see mixed SWT with discontinuous probability of non-exceedance of 15 °C; at Ovrrios, there are higher probability for the same thermal limit with minor low probability disruptions in top layer.

Probability of exceedance of 26 °C – August 2018 @Ortholothi



Probability of exceedance of 26 °C – August 2018 @Ovrrios

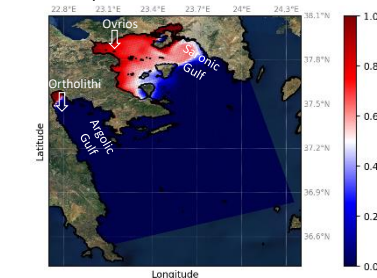


During August, stratifications are observed in the SWT; At Ortholothi high probability of exceedance of 26 °C is seen up to 20-30 m depth; At Ovrrios high probability is seen up to 25 m is disrupted with low probability of exceedance.

Conclusions and Recommendations

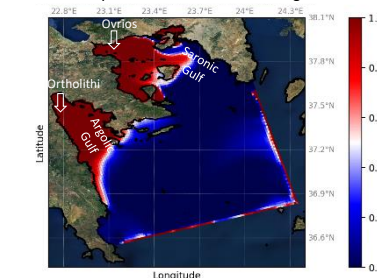
- Mixed SWT in winter in both stations; Ovrrios at higher risk of lower thermal limit; Adapt winter diet or change feed ratio
- Ortholothi at higher risk of upper thermal limit; flexible depth of fish cage is recommendable
- Spatial uncertainty information is useful in site selection of new farm installation
- Only uncertainty from atmospheric forces are considered; Other sources such as parametric uncertainties need to be evaluated
- SWT model result could be used to yield bio-economic model; fish growth and farm economy will be predictable

Probability of non-exceedance of 15 °C – March 2018



Saronic gulf show higher probability of non-exceedance of 15 °C than Argolic gulf.

Probability of exceedance of 26 °C – August 2018



Both gulf areas show a higher probability of exceedance of 26 °C. Open sea beyond the gulfs shown consistently low probability for both thermal limits.

Acknowledgment

This project has received funding from the European Union's Horizon 2020 research and innovation program under grant agreement No 821934